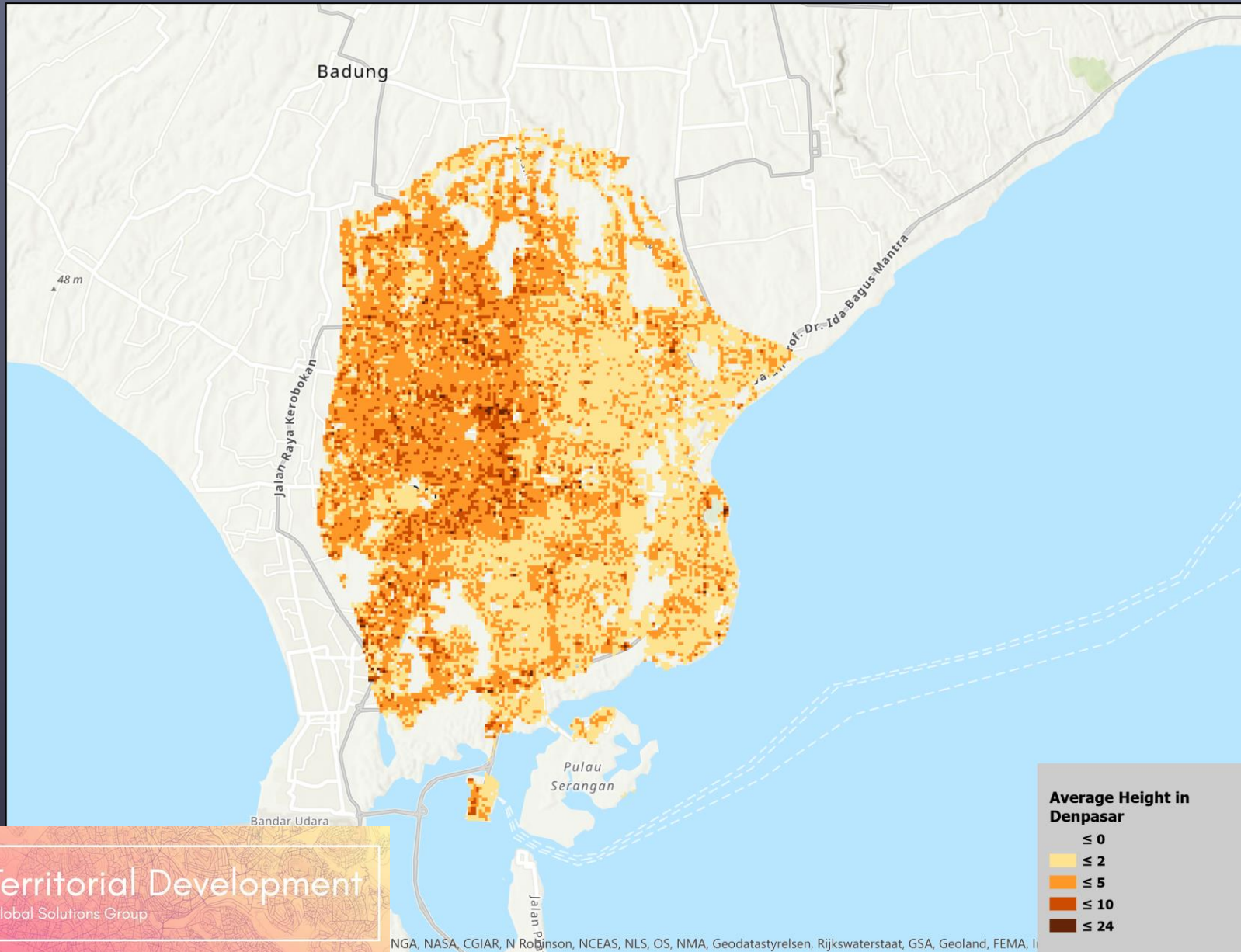


DENPASAR

DENPASAR – BUILDING HEIGHTS DATA

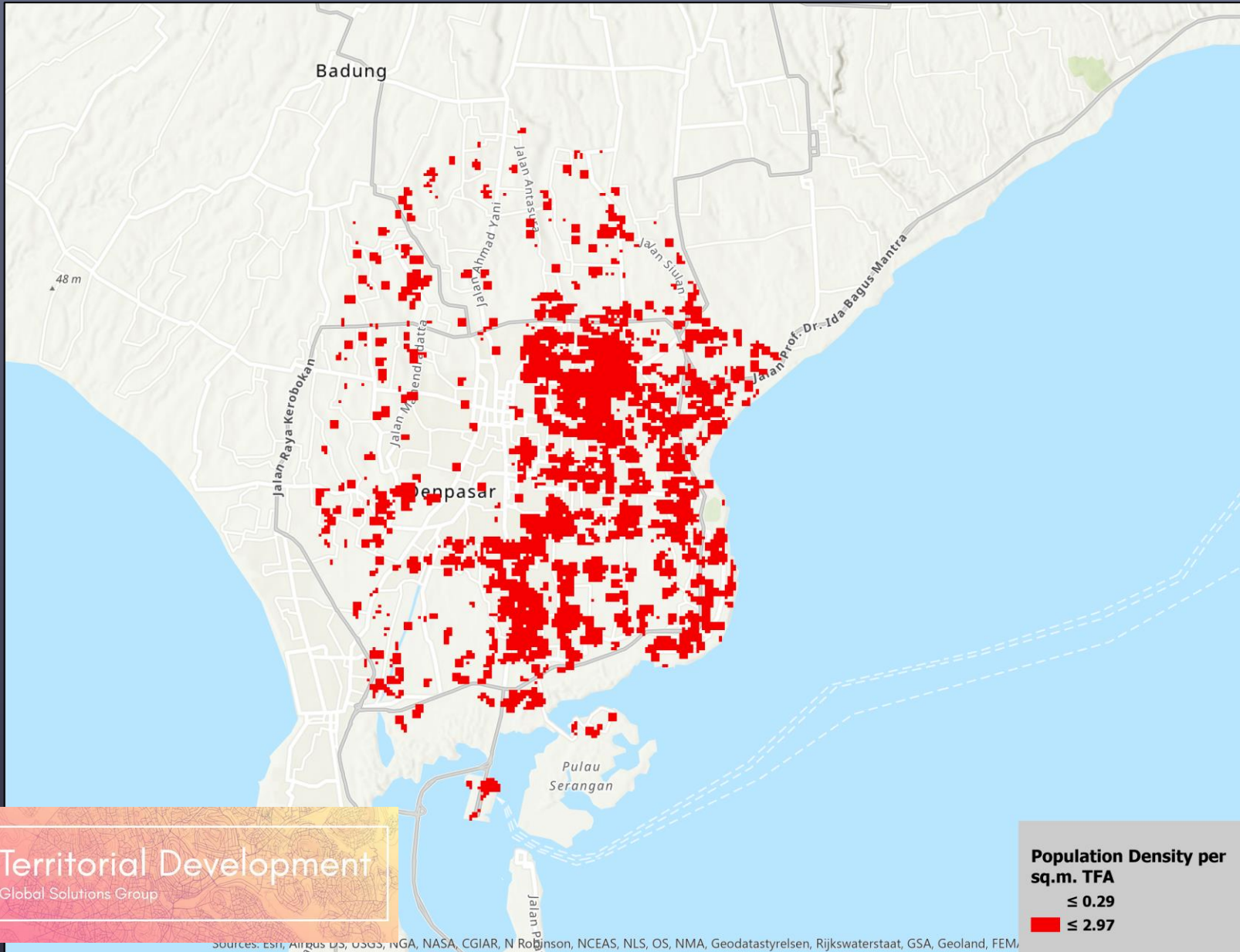


- ▶ Building heights data
 - ▶ Average building height, per pixel
 - ▶ Each pixel is 90x90 meters

DENPASAR

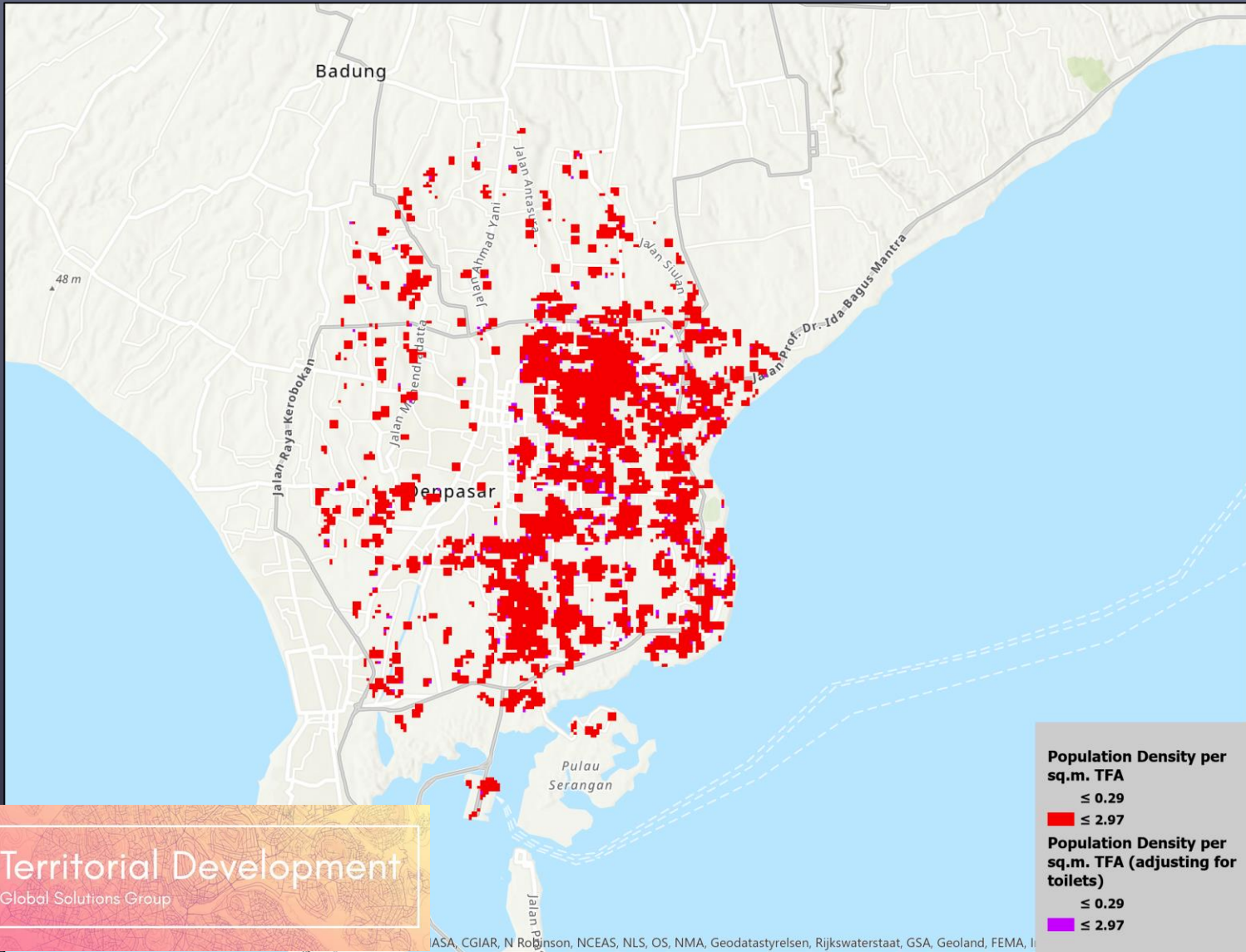
POTENTIAL HOTSPOTS

DENPASAR – FIRST SET OF POTENTIAL HOTSPOTS



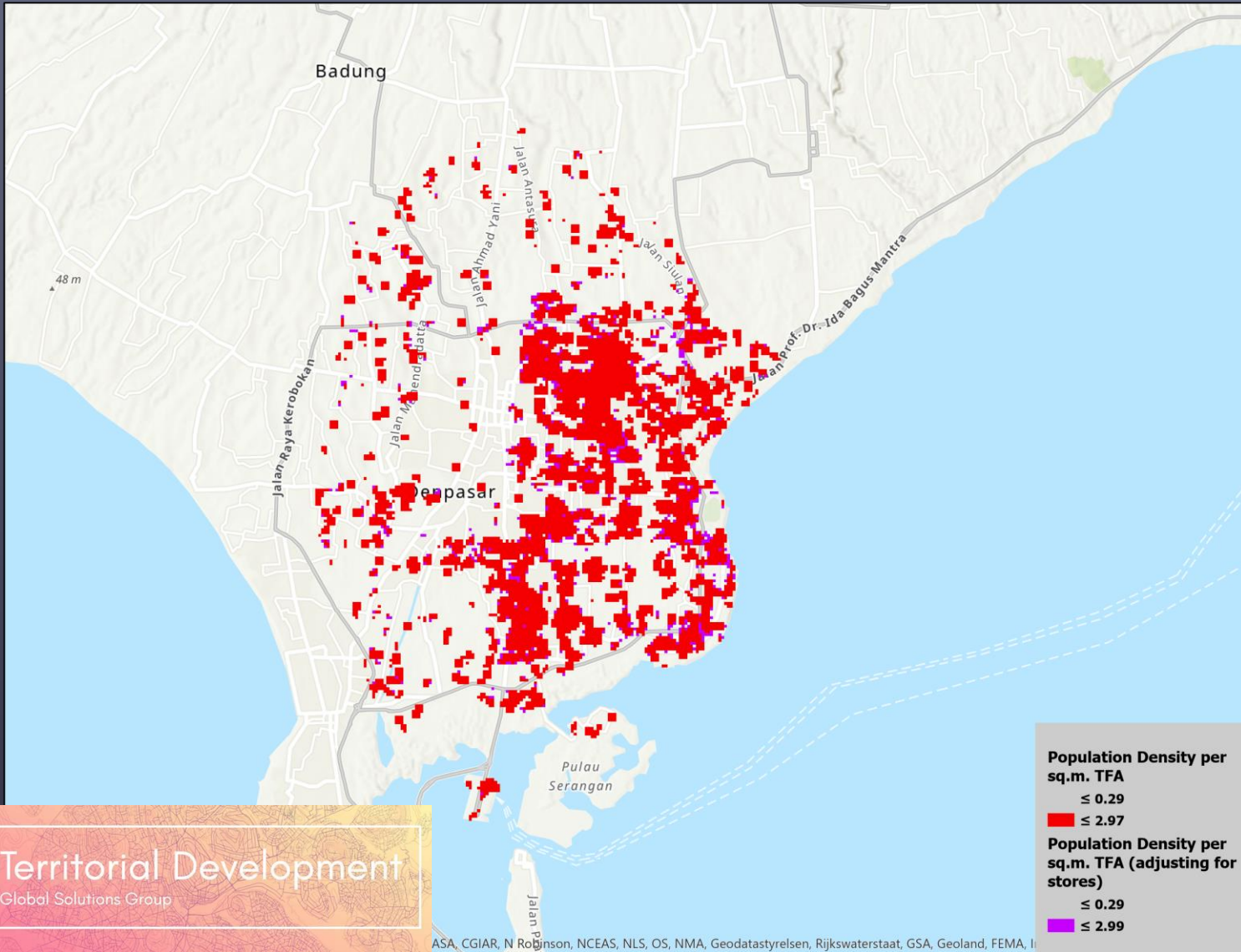
- ▶ Hotspots cover 54.6 km^2
- ▶ Affected Population: 535 thousand
- ▶ 27.3% of total population impacted

DENPASAR – SECOND SET OF POTENTIAL HOTSPOTS ACCOUNTING FOR LOCATION OF PUBLIC TOILETS



- ▶ Total area covered by Hotspots: 56.5 km^2
- ▶ Total Affected Population: 554 thousand
- ▶ 28.3% of total population impacted

DENPASAR – SECOND SET OF POTENTIAL HOTSPOTS ACCOUNTING FOR LOCATION OF SHOPS



- ▶ Total area covered by Hotspots: 59.3 km^2
- ▶ Total Affected Population: 584 thousand
- ▶ 29.8% of total population impacted